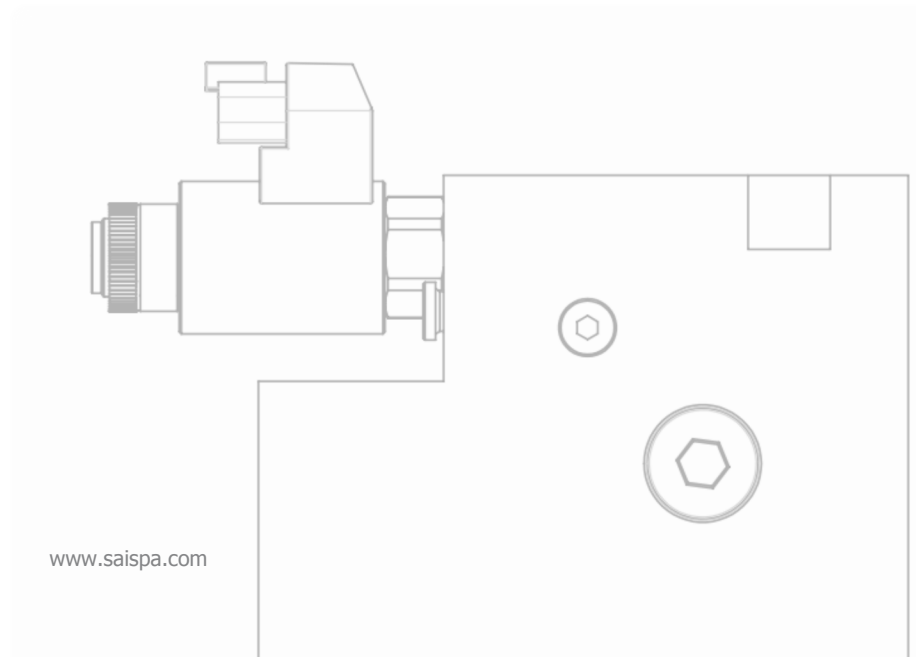




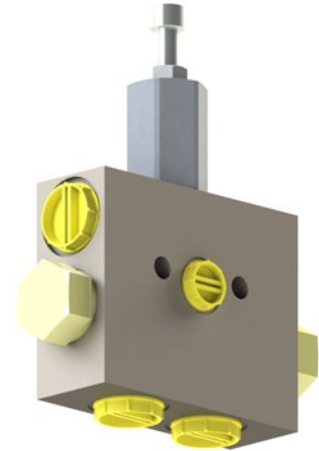
FLUSHING-VALVE



www.saispa.com

BIDIRECTIONAL FLUSHING VALVE:

- Up to 500 bar (7255 psi)
- Exchange flow 60 l/min (15.85 gpm) Threaded connections:
 - o ISO 1179 (BSPP/Gas)
 - o ISO 11926 (UNF)
- Weight : 2.1 kg (4.63 lbs)
- Material: Steel
- Surface treatment: Phosphating.

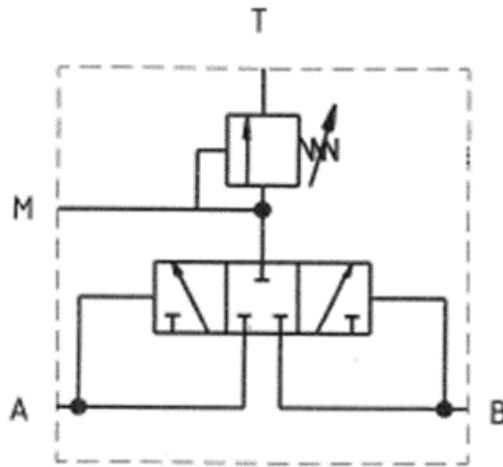


Specifications are subject to change without notice.

DESCRIPTION:

The flushing valve, also called exchange valve is used to bleed the hot oil toward a cooler in the hydrostatic transmission. As the cooled oil continuously regulates the hydraulic circuit temperature, the flushing valve operation increases the fluid quality, thus the life span of the transmission. Our flushing valve can be installed on any type of hydraulic circuit. This valve is customizable and can be modified as per our customer's application type. The pressure exchange can also be adjusted to complement our customer's needs.

HYDRAULIC SCHEMATIC:



OVERALL DIMENSIONS:

Millimeter (inches)

